

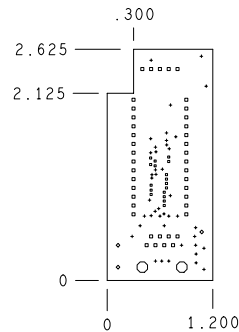
4

3

2

1

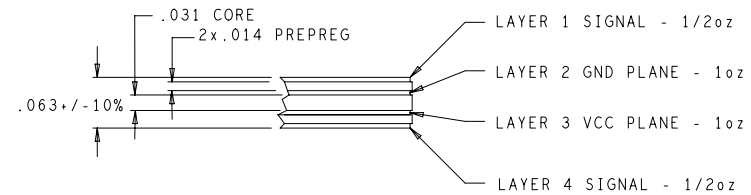
REVISIONS			
REV	DESCRIPTION	DATE	APPROVED
**	RELEASE FOR MANUFACTURING	12/01/05	CKS
*A	REMOVED PROTON FROM SILKSCREEN. ADDED SILKSCREEN TEXT AND CYPRESS LOGO. ADDED TP2 AND TP3 GROUND TEST POINTS. REMOVED J3.	05/23/06	DFK




DRILL CHART				
ALL UNITS ARE IN MILS				
FIGURE	SIZE	TOLERANCE	PLATED	QTY
.	10.0	± 0.003 -0.010	PLATED	42
.	20.0	0.003	PLATED	17
◻	35.0	0.003	PLATED	41
.	43.0	0.003	PLATED	3
○	128.0	0.003	NON-PLATED	2

NOTES: UNLESS OTHERWISE SPECIFIED

- RoHS COMPLIANT CERTIFICATION OR MATERIAL DECLARATION REQUIRED
- MATERIAL:
 - NELCO 4000-11 OR IS420 OR EQUIVALENT. MATERIAL MUST CONFORM TO UL94V-0.
 - USE HTE COPPER 1/2 oz. COPPER FOIL EXTERNAL LAYERS AND 1 oz COPPER FOIL FOR INTERNAL LAYERS UNLESS OTHERWISE SPECIFIED IN STACK VIEW.
 - OVERALL METAL TO METAL THICKNESS .XXX +/- 10%
- DRILLING:
 - DIAMETERS IN DRILL TABLE ARE FINISHED HOLE SIZES +/- .003. UNLESS OTHERWISE SPECIFIED IN DRILL TABLE.
 - TEARDROP ALLOWED ON ENTRY OF VIA ON EVERY TRACE LAYER.
- PLATING:
 - COPPER PLATING IN THRU-HOLES .001" min.
- MARKING:
 - SILKSCREEN IN WHITE NON-CONDUCTIVE EPOXY INK ON PRIMARY SIDE OF THE BOARD OR BOTH SIDES IF APPLICABLE.
 - FABRICATOR TO ETCH DATE CODE AND LOGO ON SECONDARY SIDE.
- FINAL FABRICATION:
 - SOLDERMASK PRIMARY AND SECONDARY SIDE OF BOARD USING LIQUID PHOTOIMAGABLE. MASK MATERIAL OVER BARE COPPER PER IPC-SM-840. SOLDERMASK COLOR **GREEN**.
- FINISH:
 - SHALL BE ELECTROLYTIC NICKEL/GOLD, ELECTROLESS NICKEL/IMMERSION GOLD(ENIG).
 - NICKEL THICKNESS: 100-200 MICROINCHES.
 - GOLD THICKNESS 3-10 MICROINCHES.
- BOARDS SHALL BE PURCHASED FROM UL RECOGNIZED VENDORS ONLY AND SHALL BE MARKED IN COPPER ON SECONDARY SIDE OF BOARD WITH VENDORS UL IDENTIFICATION. FLAMABILITY RATING (94-V0). DATE CODE (WWYY) AND RoHS COMPLIANT SYMBOL.
- MANUFACTURE BOARD TO BE IN ACCORDANCE WITH PERFORMANCE STANDARD IPC-6011/6012 CLASS 2 BOARD TO BE INSPECTED PER IPC-600-A CLASS 2.
- MAXIMUM BOW OR TWIST SHALL NOT EXCEED 0.007 in/in.



UNLESS OTHERWISE SPECIFIED	SIGNATURES	DATE	 12230 World Trade Drive #200 San Diego, CA 92128 (858) 613-7931	
DIMENSIONS ARE IN INCHES	DRAWN ZMK	10/13/05	FABRICATION DRAWING CY3210-21X23 PROTON POD MODULE DESIGN	
TOLERANCES ON: ANGLES +/- 2°	CHECKED DFK	11/30/05		
2 PL DECIMALS +/- .010	ENGRG DFK	11/30/05		
3 PL DECIMALS +/- .005	ISSUED			
THIRD ANGLE PROJECTIONS			SIZE C	FSCM NO
CYPRESS PROPRIETARY THIS DOCUMENT CONTAINS CONFIDENTIAL, PROPRIETARY INFORMATION THAT IS CYPRESS SEMICONDUCTOR PROPERTY. DO NOT DISCLOSE TO OR DUPLICATE FOR OTHERS EXCEPT AS AUTHORIZED BY CYPRESS.			DWG NO PDCR-9277	REV *A
			SCALE: 1/1	SHEET: 1 OF 1

4

3

2

1